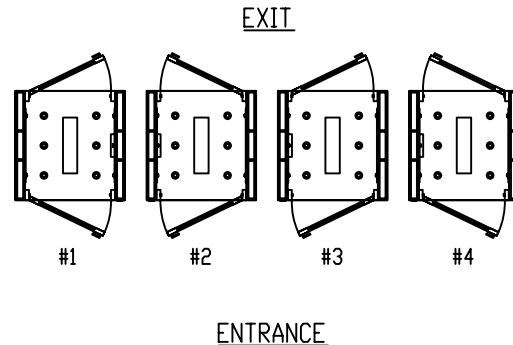
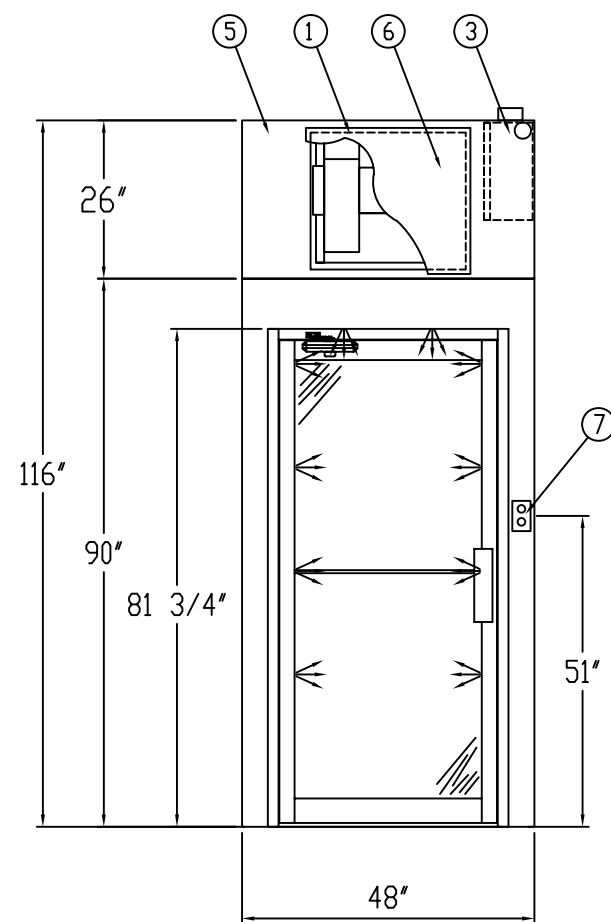


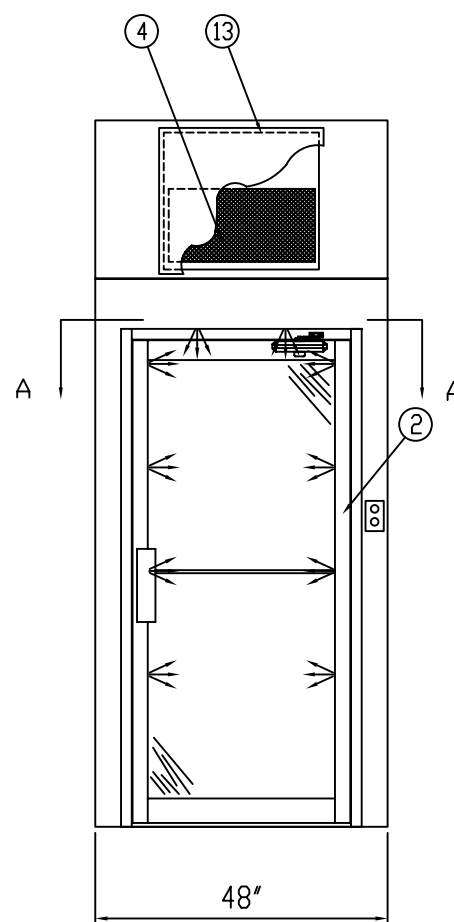
TOP VIEW



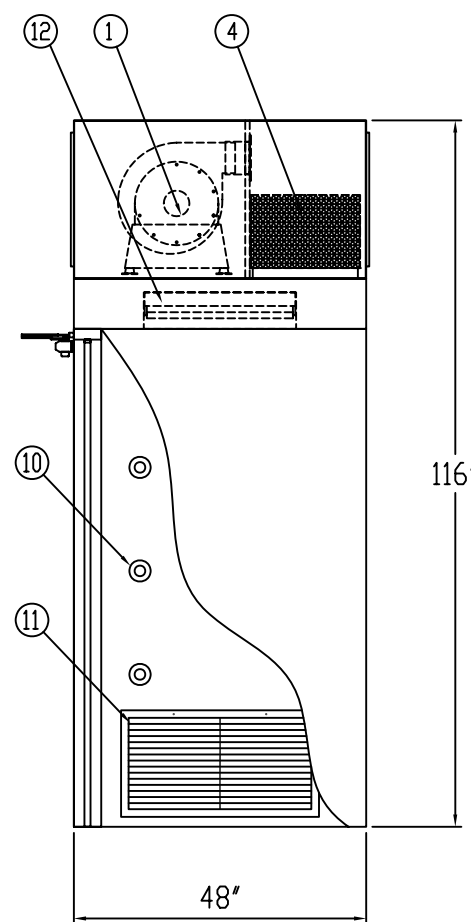
- NOTES:
- 1 - UNIT CONSTRUCTED OF 3/4 WOODBOARD WITH PLASTIC LAMINATE ON INTERIOR/EXTERIOR SURFACES, INTERIOR PLENUMS LATEX PAINTED. NO FLOOR UNIT - NO SILICONE MATERIALS USED
 - 2 - SELECTED VOLTAGE FOR AIRSHOWER:
MOTOR BLOWER 3 PHASE, 60HZ, 208V, 230V OR 460V
 - 3 - PLEASE SELECT DOOR SWING WITH FIGURE NO.
 - 4 - PLEASE INDICATE AIR SHOWER OPERATION CYCLE IN SECONDS (FACTORY PRESET AT 30 SEC.)



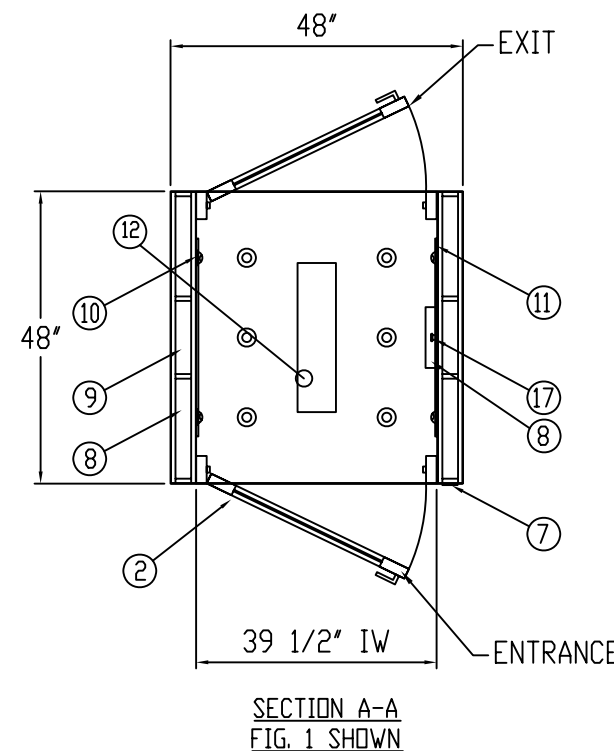
FRONT ENTRANCE VIEW



EXIT VIEW



RIGHT SIDE VIEW



- NOTES: RESPONSIBILITY OF INSTALLER
- 1 - AIR SHOWER MUST BE LEVEL AND PLUMB FOR CORRECT DOOR OPERATION
 - 2 - AIR SHOWER MUST BE BOLTED TO FLOOR THROUGH THE PREFILTER GRILLE OPENINGS (4) PLACES

THESE DRAWINGS AND SPECIFICATIONS ARE THE PROPERTY OF AIRFLOTEK, THEIR USE BY OTHERS, EXCEPT BY AGREEMENT, IS EXPRESSLY PROHIBITED.

- | REV: | DESCRIPTION: | DATE: |
|------|--------------|-------|
| | | |
- 1 - (1) EA. DIRECT DRIVE MOTOR/BLOWER, 3HP 208/230/460 3 PHASE 1000 CFM @ 4" W.G.
 - 2 - (2) EA. 36 X 80 ANODIZED ALUMINUM ENTRY/EXIT DOORS WITH POLYCARBONATE INSERTS PUSH PULL HARDWARE AND DOOR INTERLOCK.
 - 3 - ELECTRICAL PANEL BOX WITH PLC CONTROLLER (INTERNAL).
 - 4 - (1) EA. HEPA FILTER 18"x24"x11 1/2" 99.99% EFFICIENT ON 0.3 MICRONS.
 - 5 - (1) EA. REMOVABLE FILTER/BLOWER MODULE.
 - 6 - (1) EA. REMOVABLE ELECTRICAL ACCESS PANEL.
 - 7 - SYSTEM START AND LIGHT SWITCH
 - 8 - SUPPLY AIR CHASE.
 - 9 - RETURN AIR CHASE.
 - 10 - (24) PVC ADJUSTABLE HIGH VELOCITY AIR NOZZLES.
 - 11 - (2) EA. ANODIZED ALUMINUM PREFILTER GRILLES WITH 15x30x1 PLEATED PREFILTERS.
 - 12 - (2) 20W T-8 FLUORESCENT TUBE LIGHTING.
 - 13 - (1) EA. REMOVABLE HEPA FILTER ACCESS PANEL.
 - 14 - JUNCTION BOX FOR INCOMING POWER.
 - 15 - (1) EA. AIR VENT MAKE UP AIR.
 - 16 - INFRARED SENSOR FOR AUTOMATIC START.
 - 17 - EMERGENCY STOP BUTTON.

DRAWN BY: DWM		DATE: 4/11/00	
APPROVED BY:			
UNLESS OTHERWISE SPECIFIED: DIMENSIONS IN INCHES			
SHEET: OF			
SCALE: 3/8"=1'		REV:	
CUSTOMER:		DWG. NO.:	
JOB NO.		S/N:	

ASSEMBLY DRAWING FOR MODEL ASA-4848-E-PLC
PERSONNEL ENTRY AIR SHOWER

2150 Northmont Pkwy
Suite H
Duluth, Georgia 30096
PHONE: 678-475-9800
FAX: 678-475-6450

AS05A002